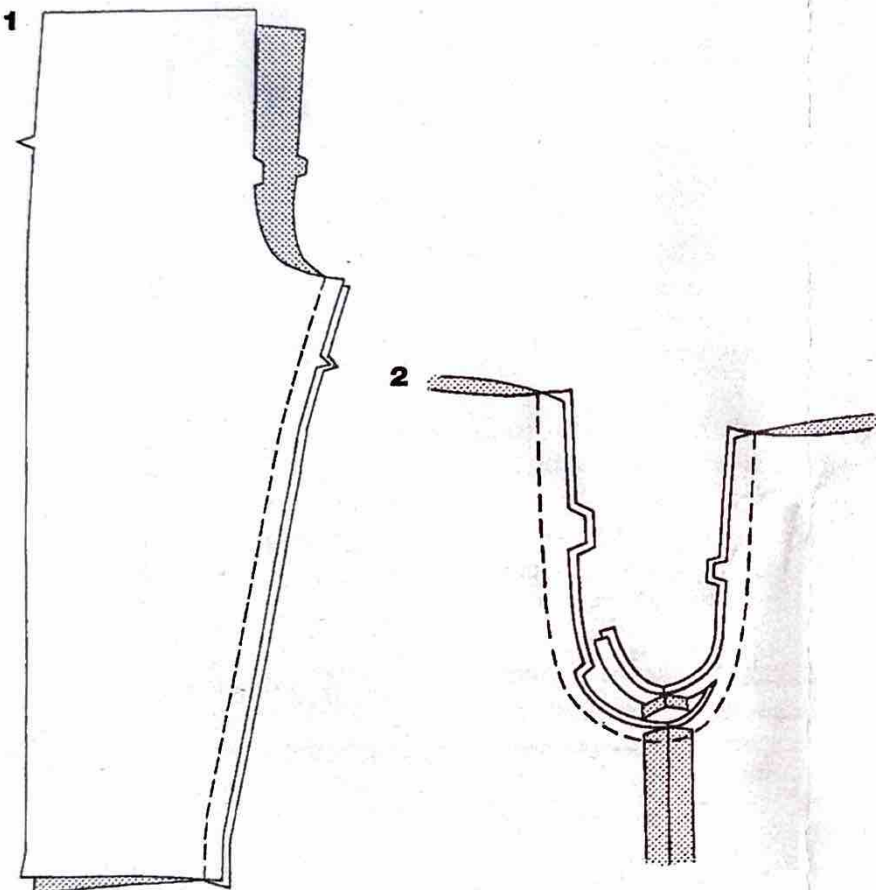


Cotton fabrics

1/2" elastic



## PANTS C OR SHORTS D

1. **Stitch/Serge** front to back at inner leg seams.

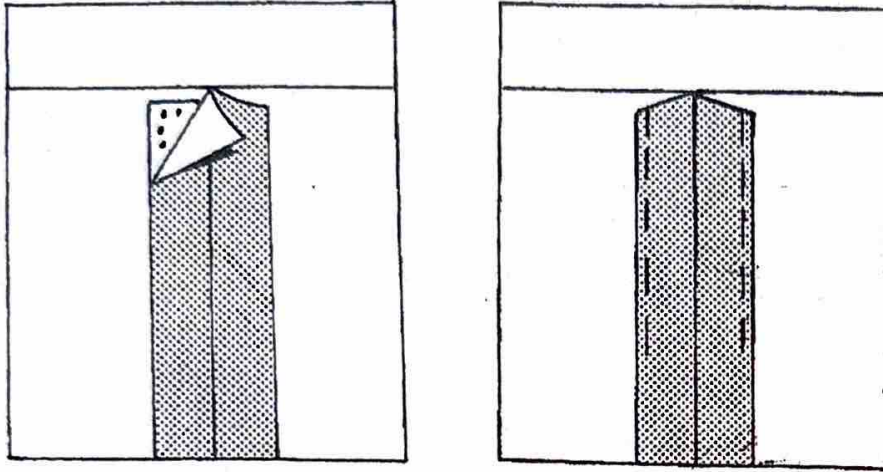
2. With **RIGHT** sides together, pin center seam, matching inner leg seams and notches. **Stitch/Serge**.

**For conventional machine**-To reinforce seam, stitch again over first stitching. Trim seam in curved area to 1/4" (6mm). Press remaining seam open.



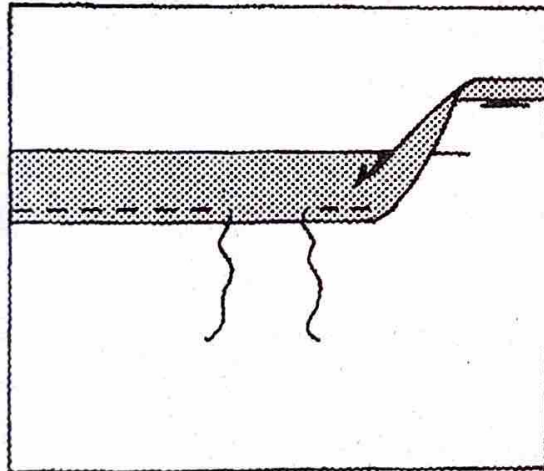
**3. Stitch/Serge front to back at side seams.**

4



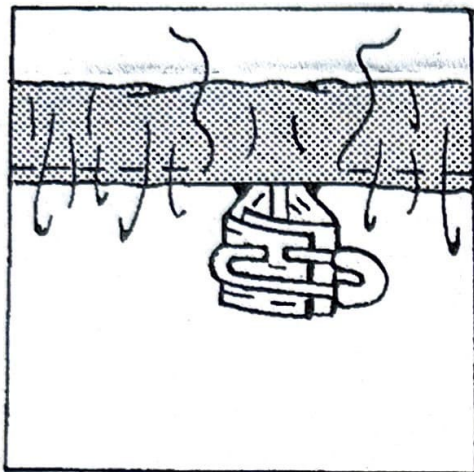
4. To keep elastic from getting stuck in the seam allowances as it's inserted, use fusible web or machine-basting to anchor them to garment within the casing area. Be sure to remove basting after casing is finished.

5



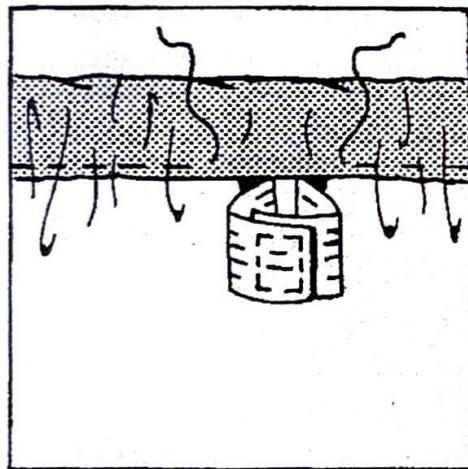
5. Press 1" (2.5cm) on upper edge to INSIDE, forming casing. Press under 1/4" (6mm) on raw edge. Stitch close to lower edge of casing, leaving an opening to insert elastic.

6



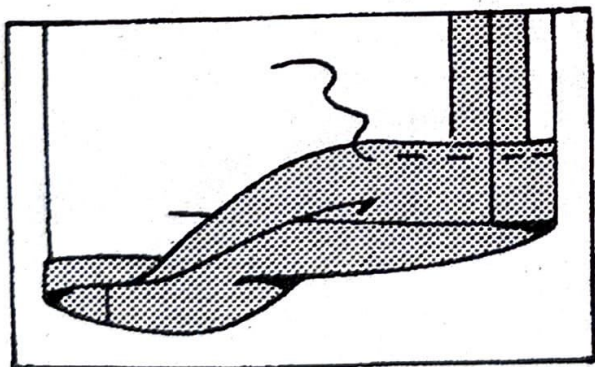
6. Cut a piece of elastic to fit waist, plus 1" (2.5cm).  
 Insert elastic through casing.  
 Overlap ends and hold with a safety pin.  
 Try on garment and adjust to fit.

7



7. Stitch ends of elastic together securely.  
 Stitch opening closed.  
 Distribute fullness evenly.  
 Remove basting.  
**TIP**-To secure elastic so it won't twist in wearing, stitch through all thicknesses of casing in the groove of each seam

8



8. Mark length.  
 Press up hem along marking.  
 Mark depth of hem; trim evenly.  
 Press under 1/4" (6mm) on raw edge.  
 Stitch close to inner pressed edge.